

Review

Substantive
Organizational
Managerial

Organizational Review Objectives

To Increase:

EFFICIENCY in the field:

Project selection not shallow but deeper

PRODUCTIVITY in normative work:

Substantive knowledge excellence

TRANSPARENCY:

Project allocated resources based on needs

ACCOUNTABILITY:

Project Based Accrual accountability

Project Based Accrual accountability



UN HABITAT
FOR A BETTER URBAN FUTURE

UN-HABITAT's Central Unit for Reorganisation PROJECT all activities

**Minimum
Budget:**
☐ \$300,000



Each Project will have:

- ☐ Project Director
- ☐ Flex team of several staff
- ☐ Project Administrator

Projects could and should be:

Normative

Operational

Global Land Tool Network (GLTN) with pilot projects

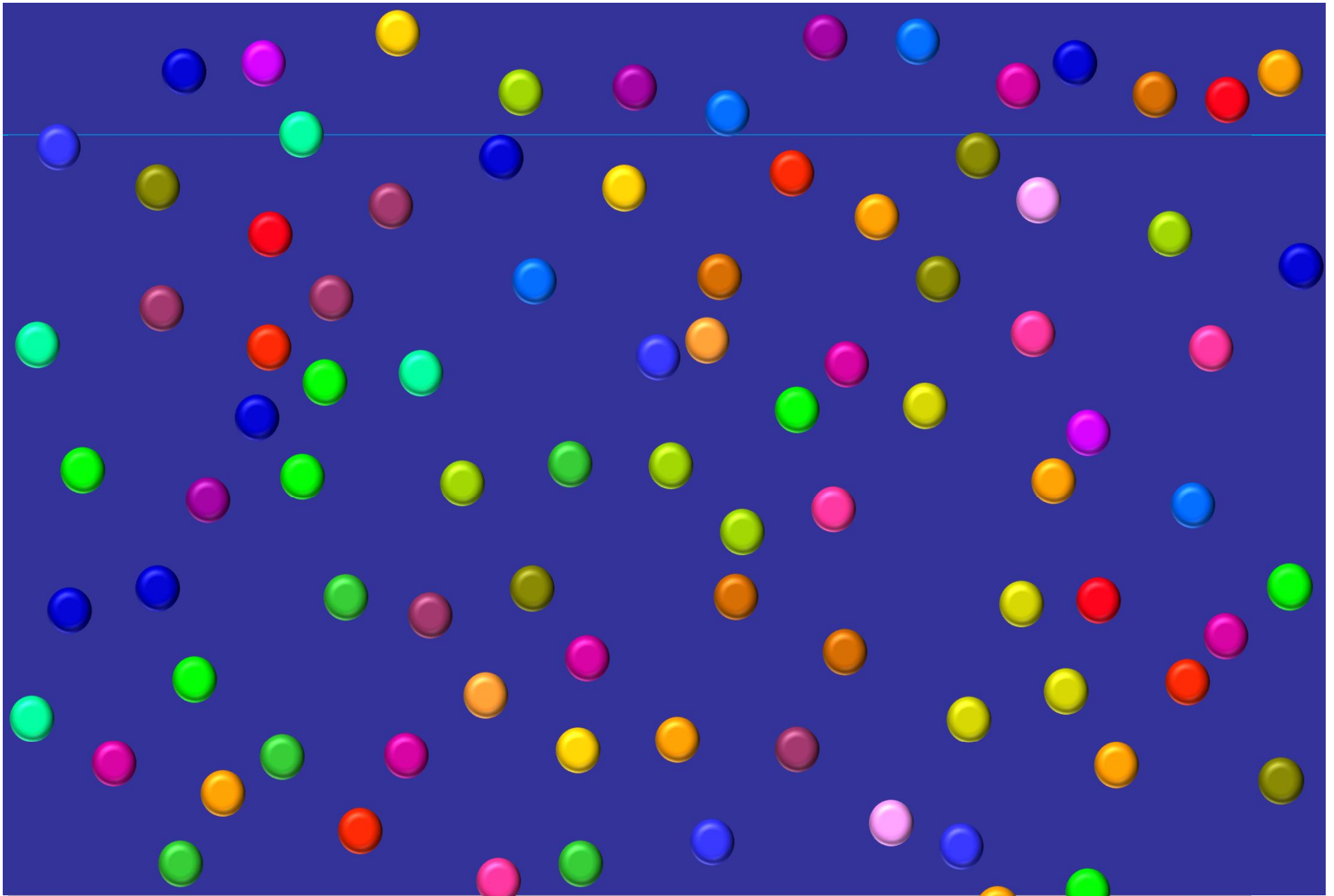
Cities in Climate Change Initiative
(CCCI) with demonstration

Land and Property Interventions in DRC
Land Conflict Management in South Sudan

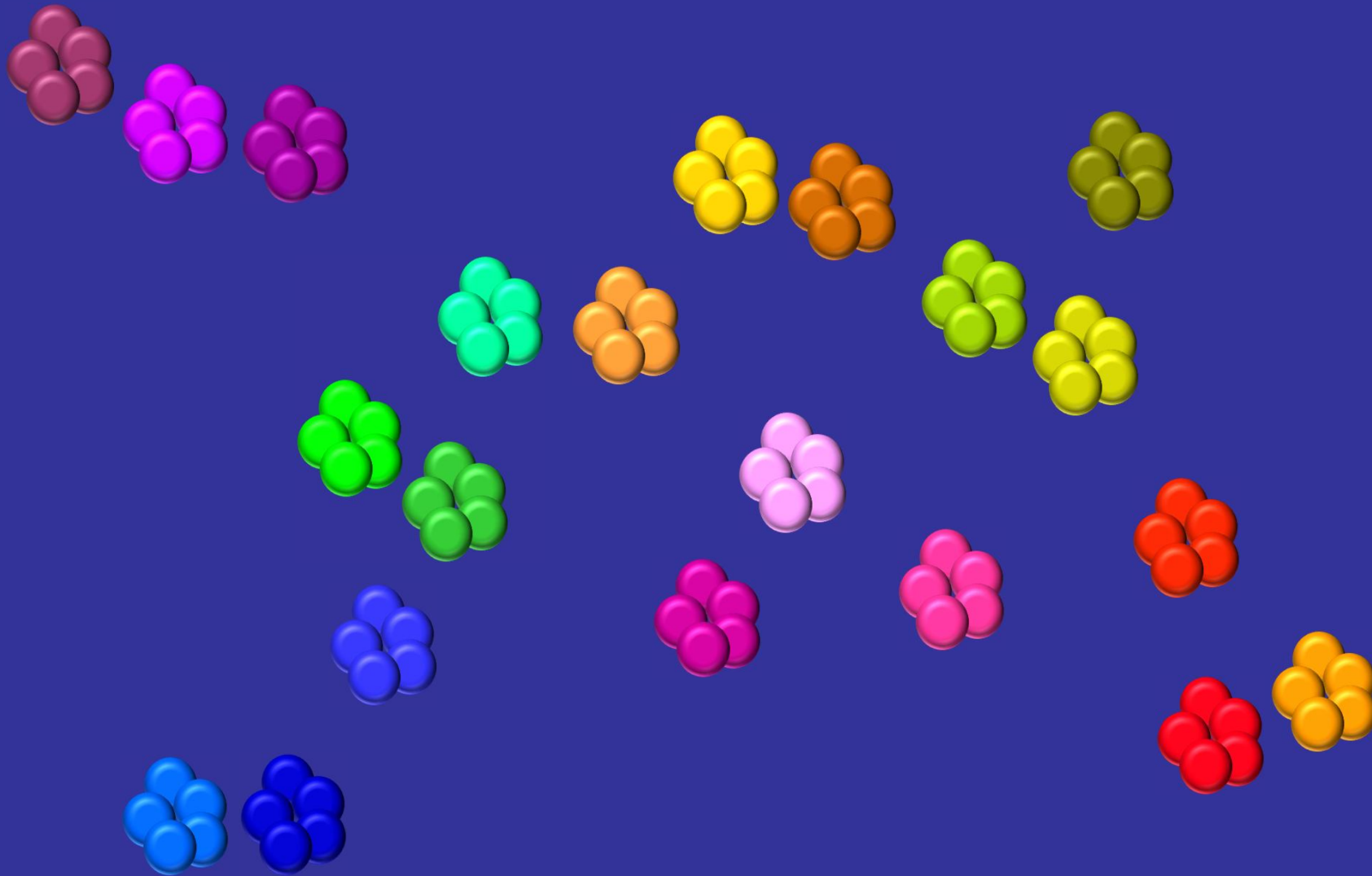
Strategic Urban Plans for Small Cities Egypt
Adapting to Climate Change Risks, Senegal

UN-HABITAT's Reorganisation PROJECT Central Unit for all activities

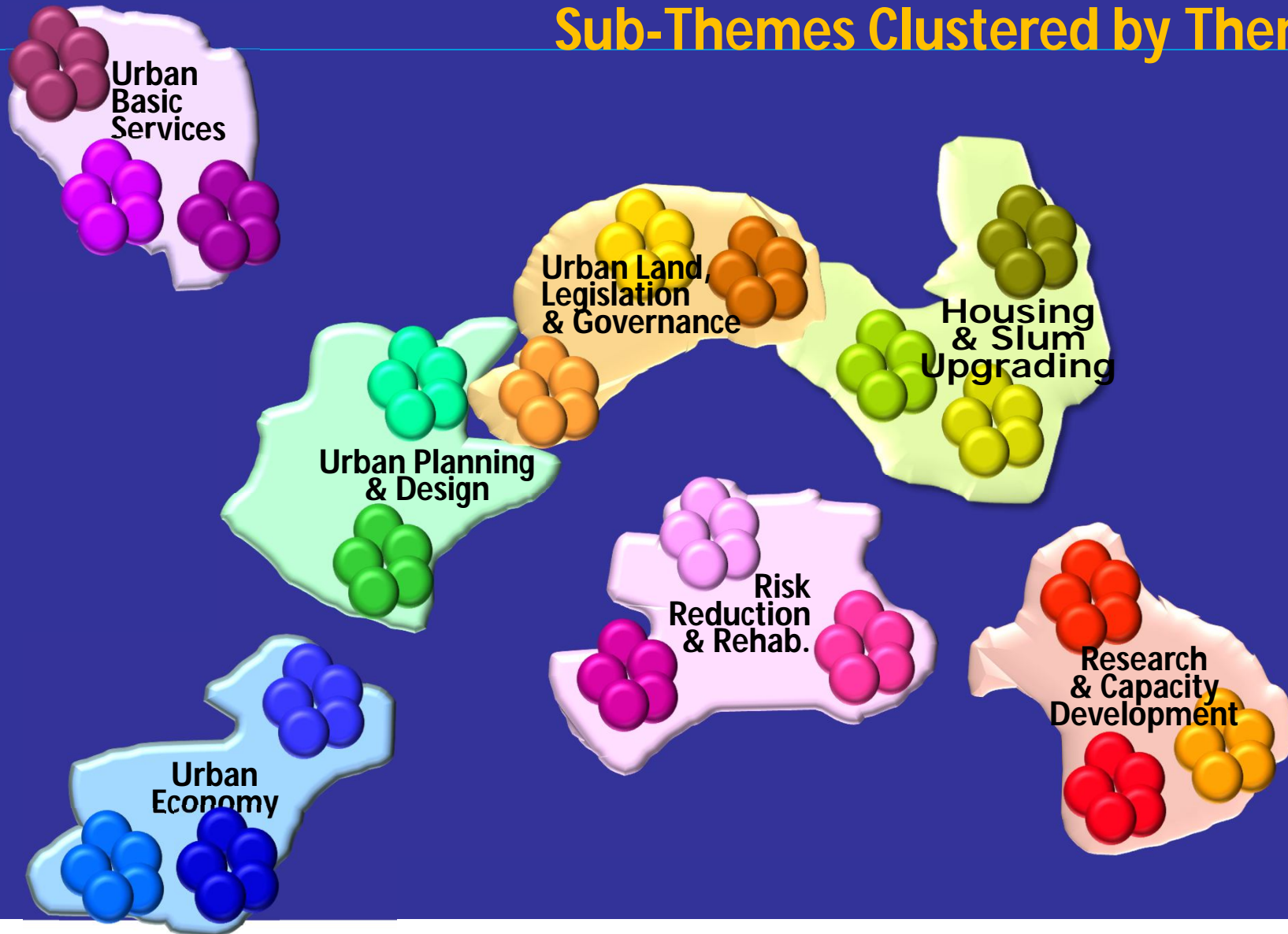




Projects Clustered by Sub-Theme



Sub-Themes Clustered by Theme



UNO HABITAT

URBAN
LAND,
LEGISLATION &
GOVERNANCE

URBAN
PLANNING &
DESIGN

URBAN
ECONOMY

URBAN
BASIC
SERVICES

HOUSING
& SLUM
UPGRADING

RISK
REDUCTION &
REHABILITATION

RESEARCH
&
CAPACITY
DEVELOPMENT

LAND &
GLTN

REGIONAL
&
METROPOLITAN
PLANNING

URBAN &
MUNICIPAL
FINANCE

WATER &
SANITATION

HOUSING

URBAN
RISK
REDUCTION

GLOBAL
URBAN
OBSERVATORY

URBAN
LEGISLATION

CITY
EXTENSIONS &
ENLARGEMENTS

URBAN
PRODUCTIVITY

URBAN
ENERGY

SLUM
UPGRADING

INFRASTRUCTURE
REHABILITATION

FLAGSHIP
REPORTS

URBAN
AND
COMMUNITY
MANAGEMENT &
GOVERNANCE

MARKET
TOWN &
INTERMEDIATE CITY
PLANNING

YOUTH
and
JOB
CREATION

URBAN
MOBILITY

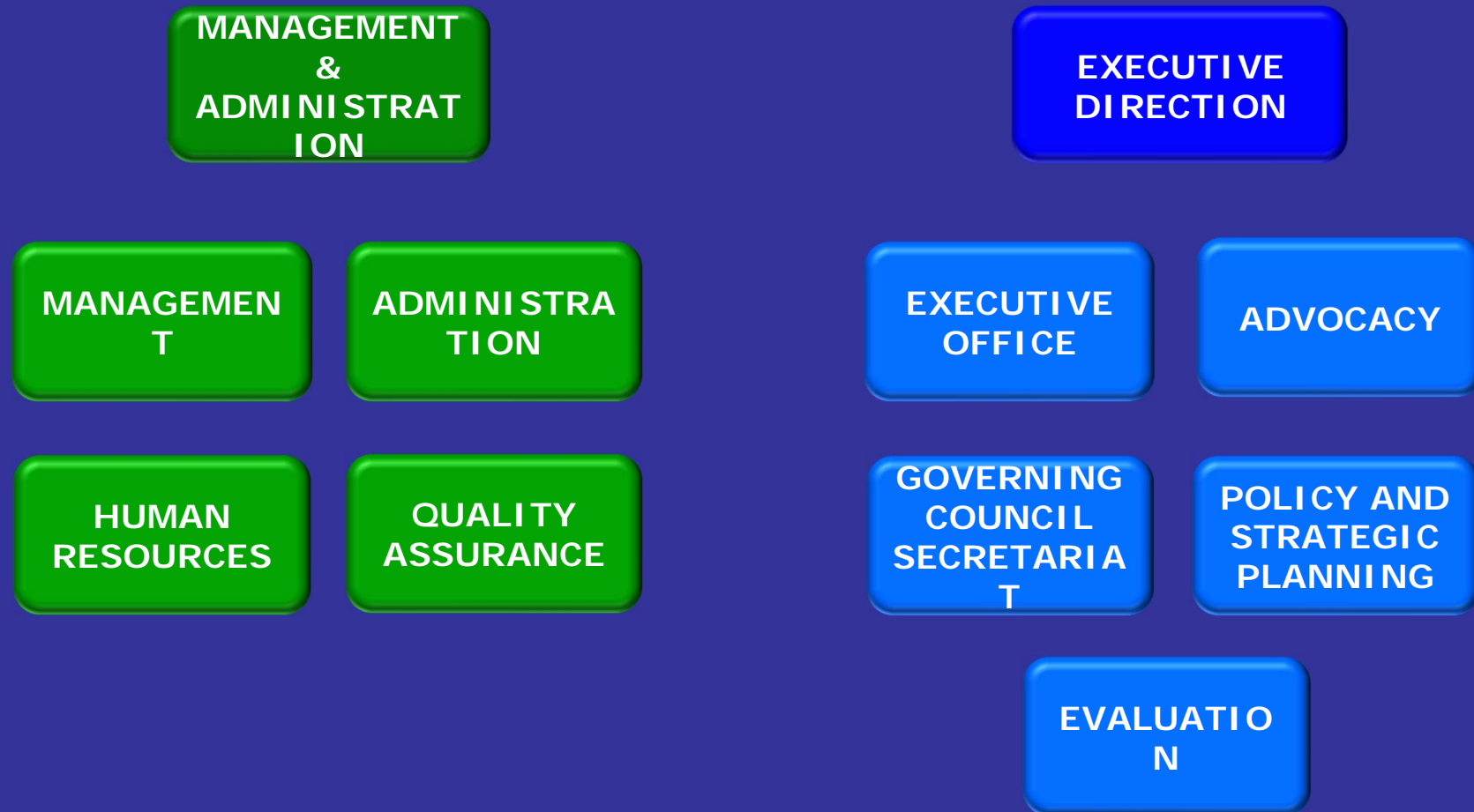
SHELTER
REHABILITATION

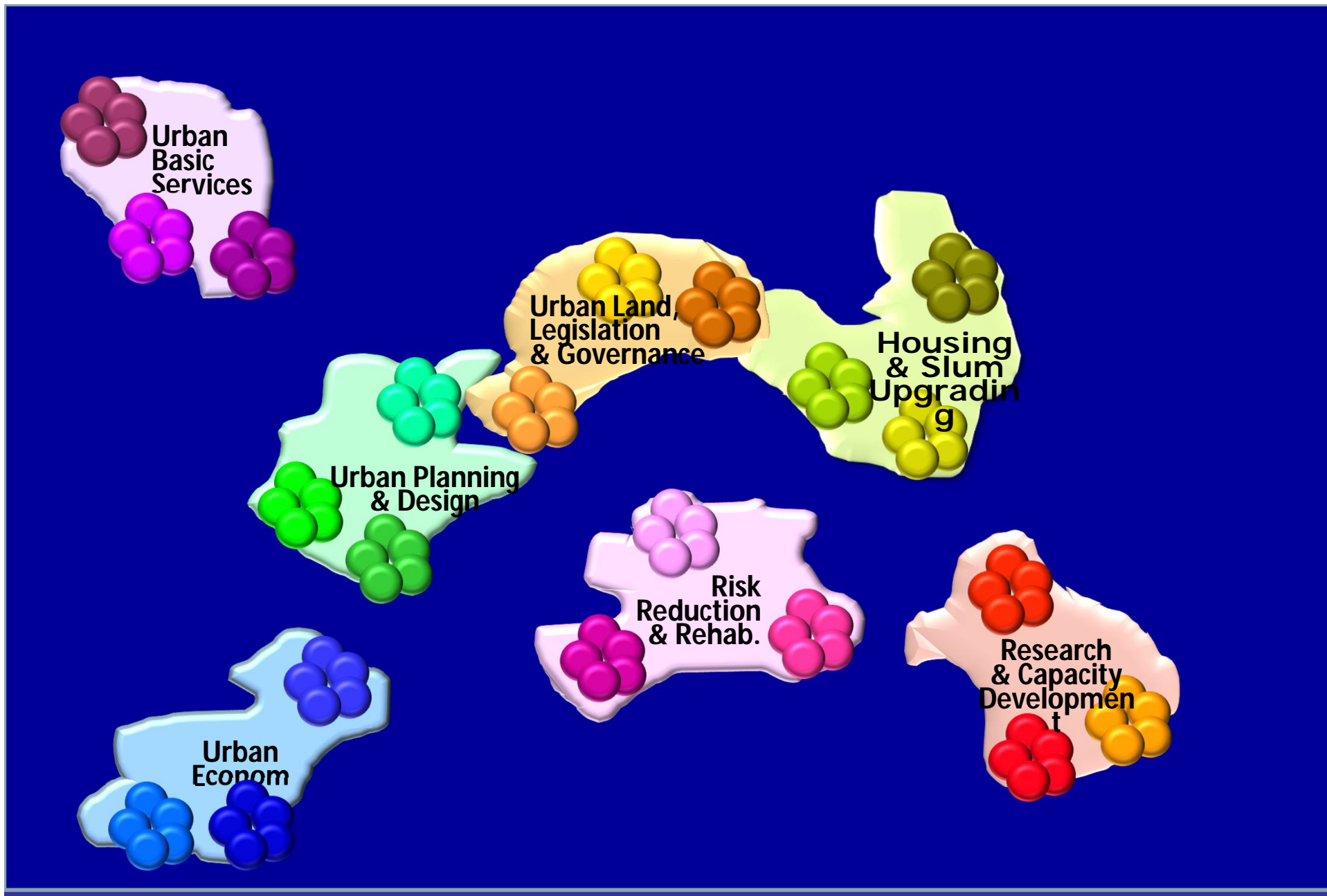
CLIMATE
CHANGE
MITIGATION &
ADAPTATION

CAPACITY
DEVELOPMENT

URBAN
WASTE
MANAGEMENT

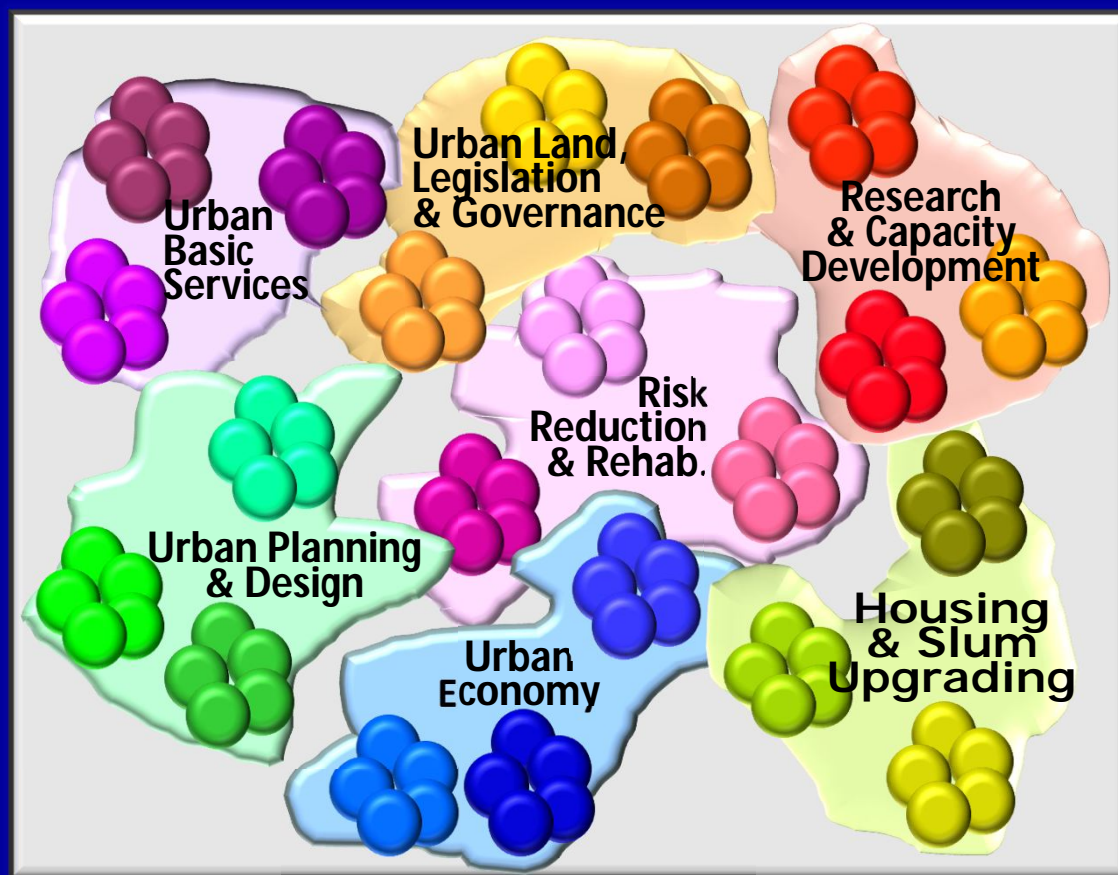
UNHABITAT





**Each Project will cover
its staff costs, including:**

- ❑ Project Director
- ❑ Flex team of several professionals
- ❑ Project Administrator
- ❑ Project secretarial support



**POOL OF
UN-
HABITAT
INTERNATI
ONAL
STAFF (G
STAFF)**

**CALLED
UPON TO
SUPPORT
PROJECTS
AS PART OF**

**POOL OF
UN-
HABITAT
PROFESSIO
NAL
STAFF**

**CALLED
UPON TO
MANAGE
PROJECTS
OR BE PART
OF FLEX**

