



UN-HABITAT

62nd Meeting of Ad Hoc Working Group-Gaza

Insights on the situation in Sudan and UN-Habitat's response to the Sudan refugee crisis



10th February 2025



The Impact of Conflict on Sudan's Settlements and Communities

Massive Displacement of Population

- As of April 15th, 2023, the conflict between the Sudanese Armed Forces (SAF) and Rapid Support Forces (RSF) resulted in widespread destruction and displacement and continued to affect the Housing, Land, and Properties (HLP) rights of millions of people.
- The Sudan conflict is the world's fastest growing displacement crisis and one of the largest protection crises facing the world today.



IOM, Data Tracking Matrix SUDAN - [MOBILITY UPDATE 14, Jan. 2025](#)



The Impact of Conflict on Sudan's Settlements and Communities

Displacement and Humanitarian Needs

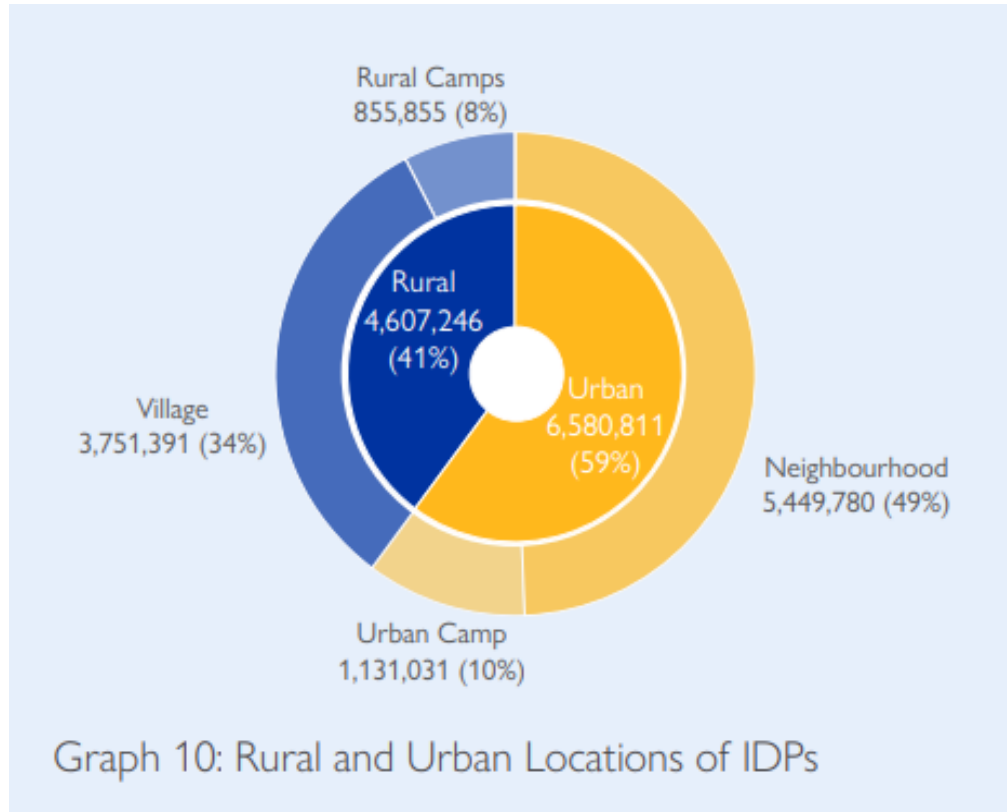
1/2 Of the population now needs urgent humanitarian and protection assistance according to OCHA Sudan

31% Of the IDPs are originated from Khartoum

53% Of the IDPs are children under 18 years

The Impact of Conflict on Sudan's Settlements and Communities

Urbanization, Impact on Services, and Infrastructure.



The Impact Of Conflict is Urban!



55% of IDPs are Women.



50% of IDPs are hosted by local communities.



70% of health facilities in Khartoum are not functioning properly



20% Drop in access to piped water



90% Electricity reliability deterioration



Destruction of Housing Units in Khartoum, 2024Osman Bakir / ANADOLU / Anadolu via AFP

Impact on Housing Sector



6,928

Houses are severely or partially damaged in Omdurman locality



118,000 Houses are destroyed totally or partially due to floods (OCHA 2025)

Cultural Heritage is at Risk!

Damage to Heritage Sites: Historical buildings, monuments, and archaeological sites have been particularly affected.

Looting and Vandalism: Increase in looting and vandalism of cultural artifacts. Many valuable items have been stolen or destroyed, further endangering Sudan's cultural legacy.

Impact of Displacement on Sites: The displacement of local communities has also impacted the preservation of intangible cultural heritage, such as traditional practices, languages, and crafts.

Drainage issues/Impact of Floods



Condition of Naqa Monuments Feb.2024



Wet Sandstone in Royal Morewe



Al Atab Mosque in El Fasher

Current Challenges

I
S
S
U
E
S



Destruction & Displacement. Stress on urban basic services.



HLP Challenges: Loss of lands, properties, ownership documents; tenure insecurity; forced evictions; land grabbing.



Climate & Natural Disasters: Floods, droughts, and desertification exacerbate conflicts.



Monitoring Issues: Insecurity and access challenges hinder tracking HLP violations and provision of support.



IDP Risks: Eviction from temporary shelters (schools, public buildings, open spaces) and lacking basic amenities.

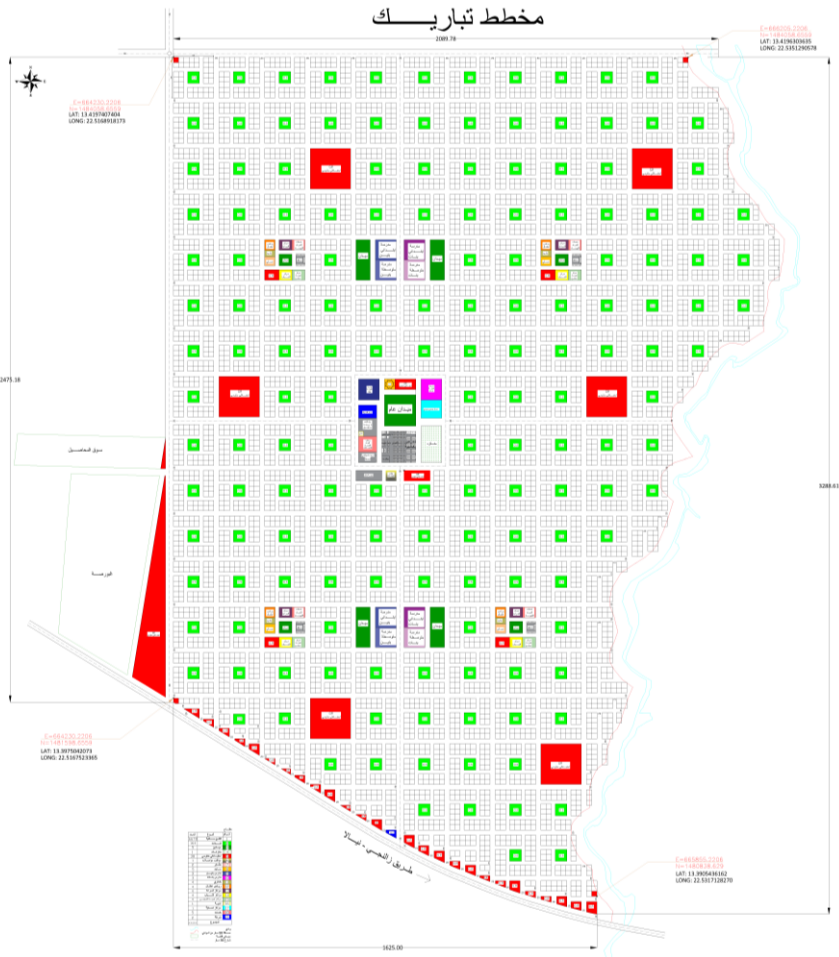


Governance capacities: Inefficiencies lead to disputes, violent conflicts, and displacement.

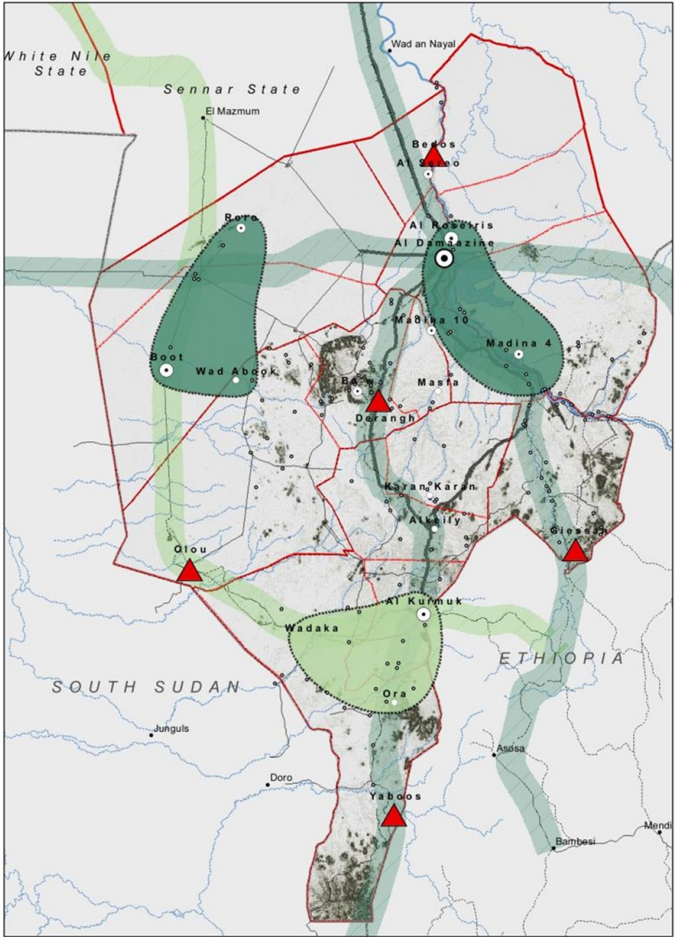
Restitution: Essential for safe, voluntary return and peace.

Key Achievements during the past few years

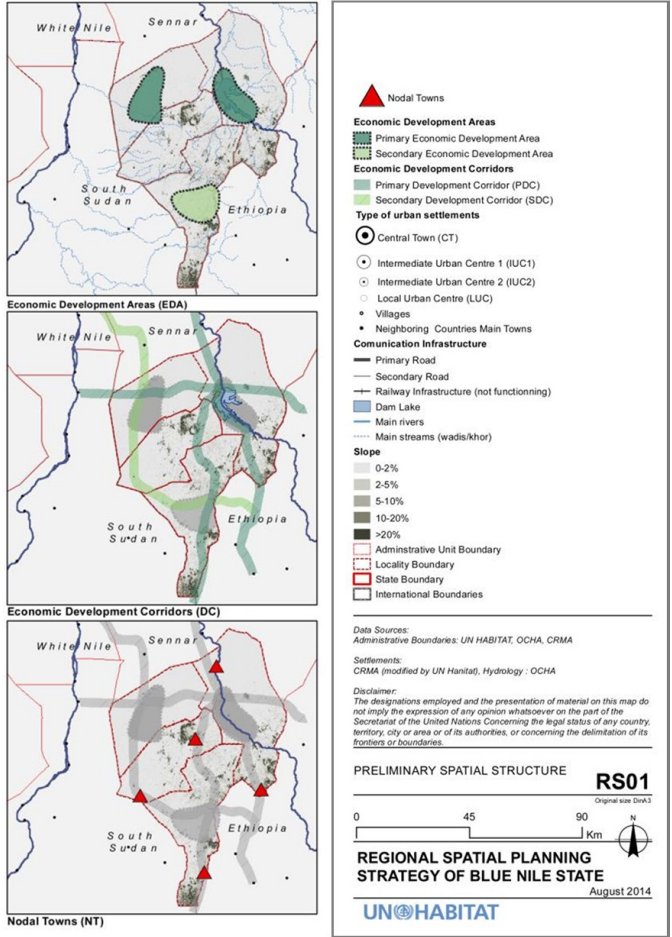
Development of Regional Spatial Strategies and IDPs Resettlement Plans



IDPs resettlement plan West Darfur.

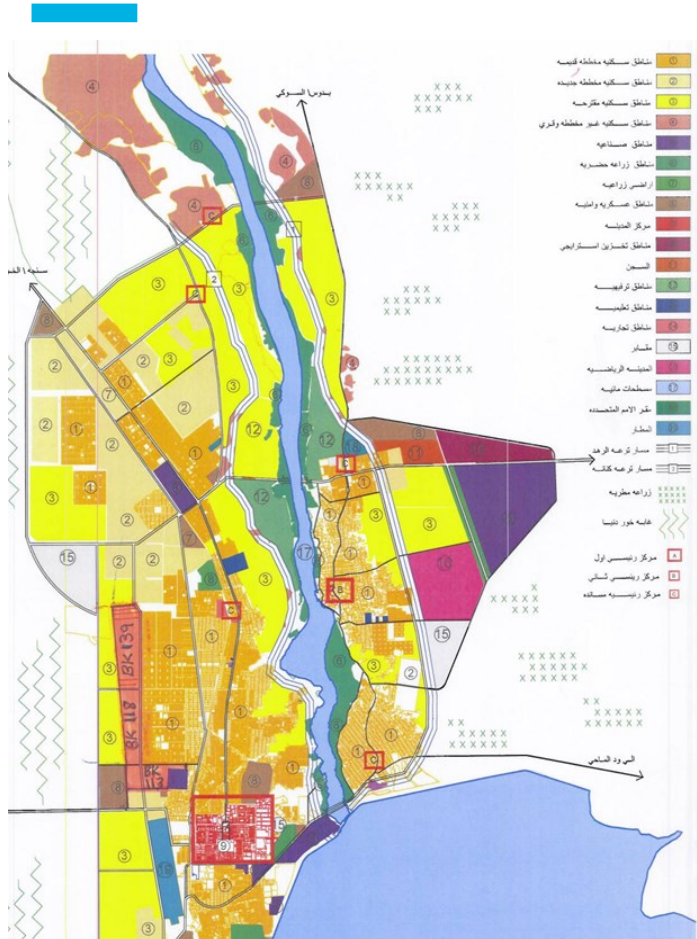


Regional spatial strategy of Blue Nile State.

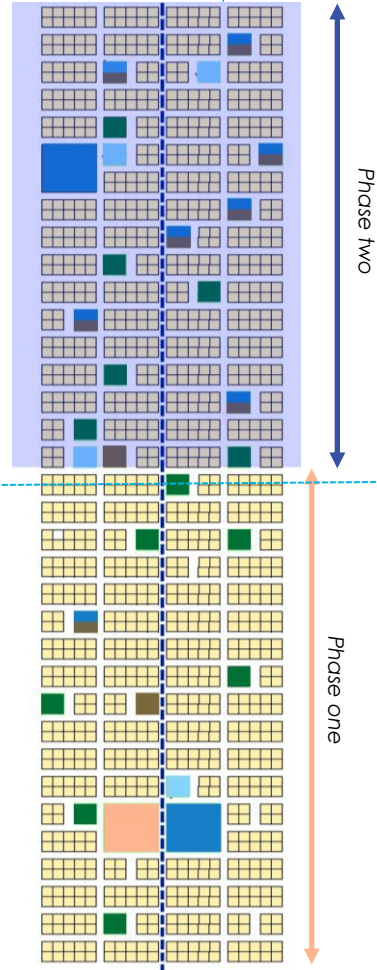


Key Achievements During the past few years

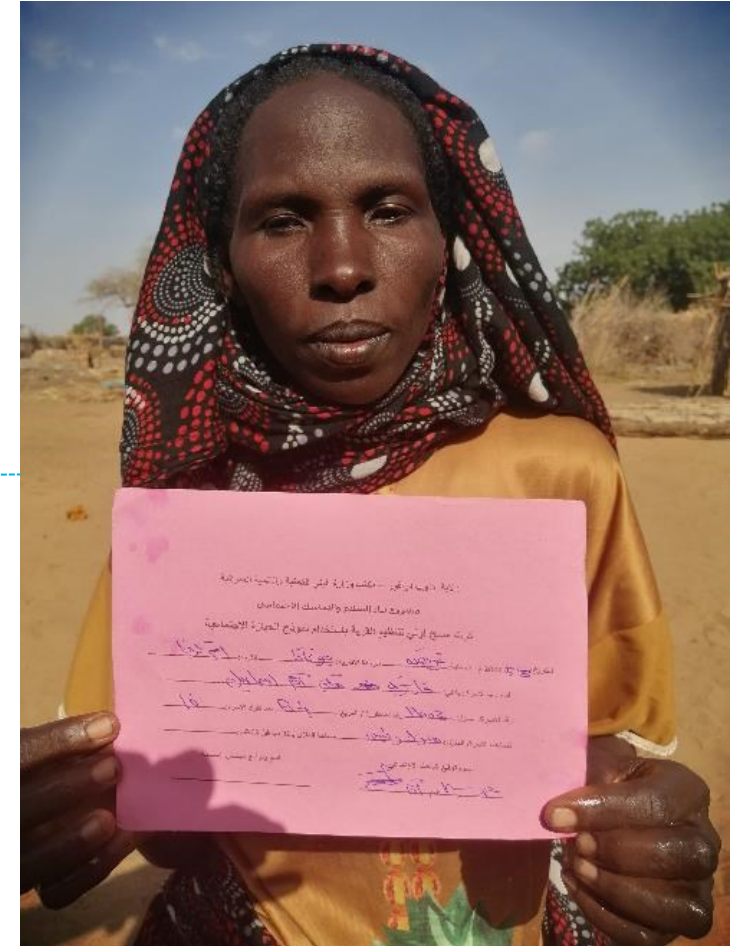
Granting Access to Secure Tenure and Land Titles



Development of Damazin city urban plan



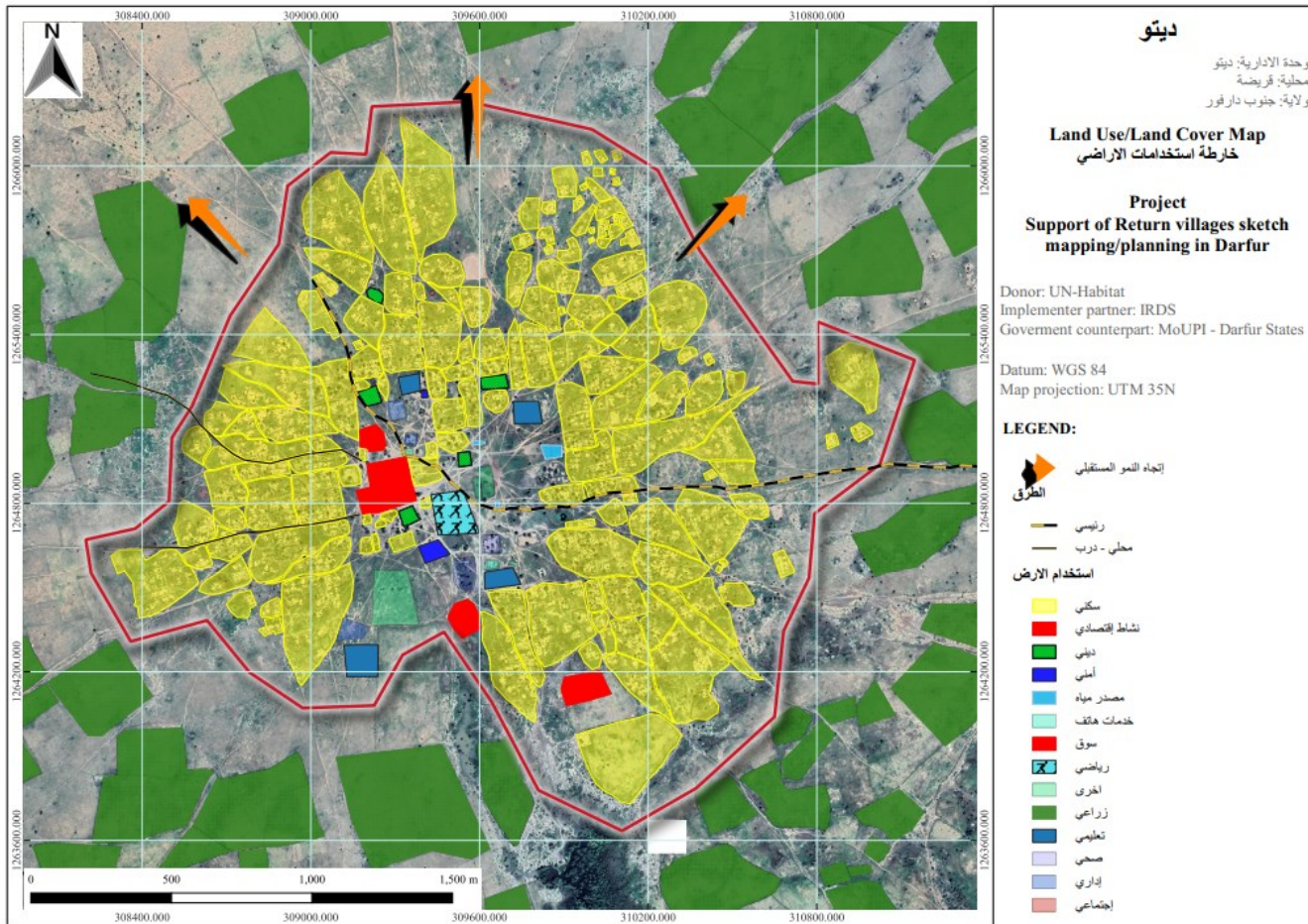
Planning and granting land titles of Block 128



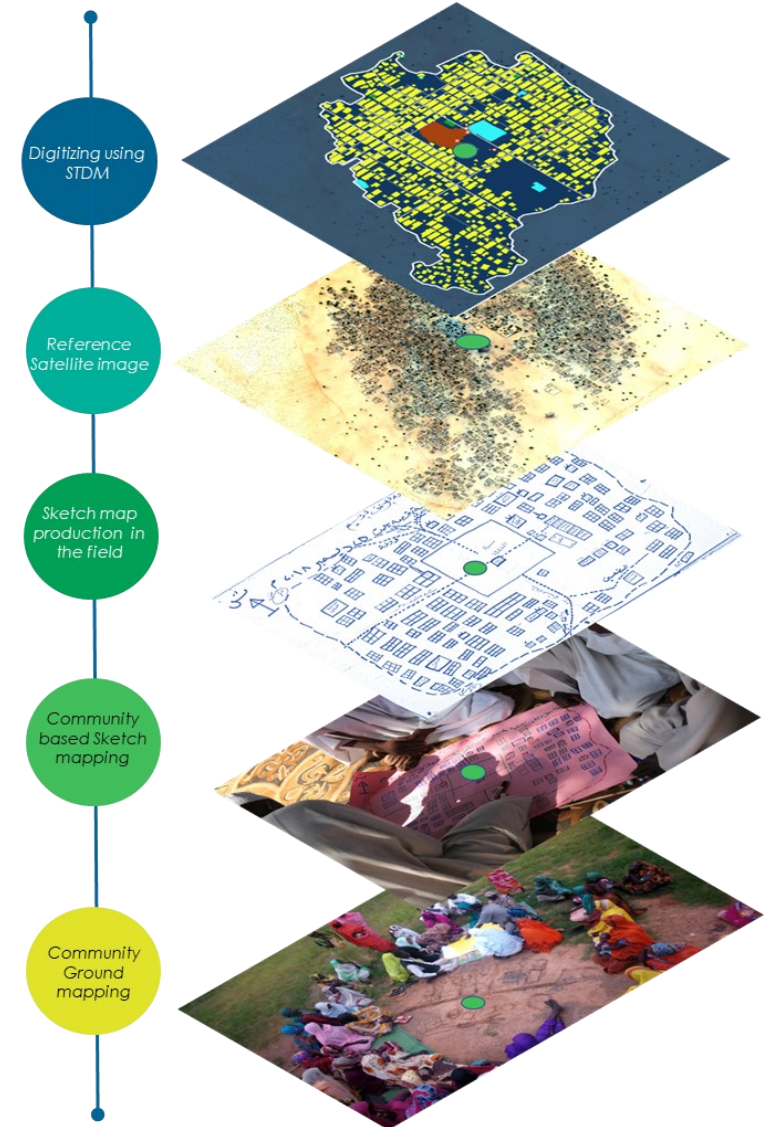
Granting land records, and titles.

Key Achievements During the past few years

Development of Return Village Profiles, and land records



Utilizing **STDM** to develop village maps and land records



Community-based approach to mapping and profiling of villages

Sudan Country Response/Priorities

Integration of HDP Nexus

Complex Issues in Sudan:

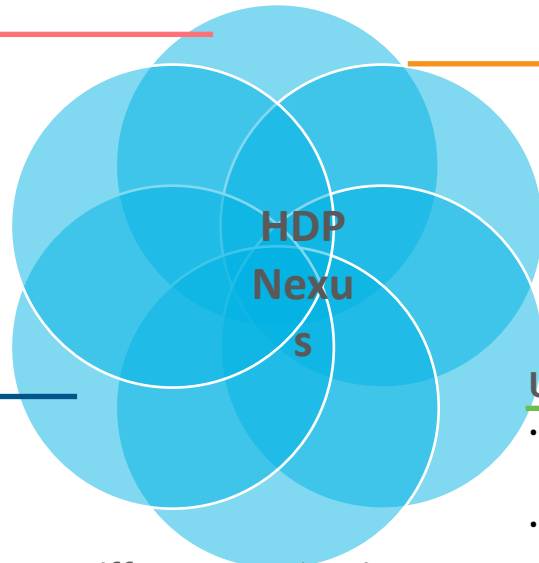
- Displacement and urban crisis require combined humanitarian and development interventions.

Urban Profiling; A tool to integrate HDP efforts

- Aligning urban profiling with HDP nexus.
- Ensures effective integration of humanitarian aid, development, and peacebuilding.

Urban Basic Services

- Provides detailed insights into socio-economic and spatial dynamics.
- Tailors interventions to specific urban population needs.



Goals of Interventions:

- Address acute needs.
- Accelerate recovery.
- Consider long-term impacts.

Urban Recovery Framework:

- Collaboration among local governments, communities, and other actors.
- Address both acute and chronic needs together.

Different Perspectives: Local Communities

- Local governments: Holistic view of city and communities.
- Crises seen as part of long-term development.



UN-Habitat Sudan Appeal for Funding to Address Gaps:

A. Development of Rapid Urban Profiles for 10 Cities Affected by Conflict.

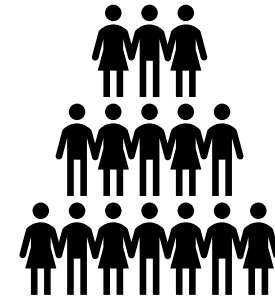
B. Safeguarding Housing, Land, and Property (HLP) Rights for Displaced People.

C. Supporting community-based response to urgent shelter and housing needs, and access to basic services.

**Estimated Amount
10 Millions USD**

REGIONALIZATION OF THE DISPLACEMENT CRISIS

- The influx of displaced persons has placed significant strain on host communities, requiring a coordinated response that balances **immediate humanitarian aid with long-term, sustainable settlement solutions.**
- **UNHCR, UN-Habitat, and the World Bank** are working together to support governments in developing integrated settlement planning approaches that foster resilience, economic inclusion, and social cohesion.



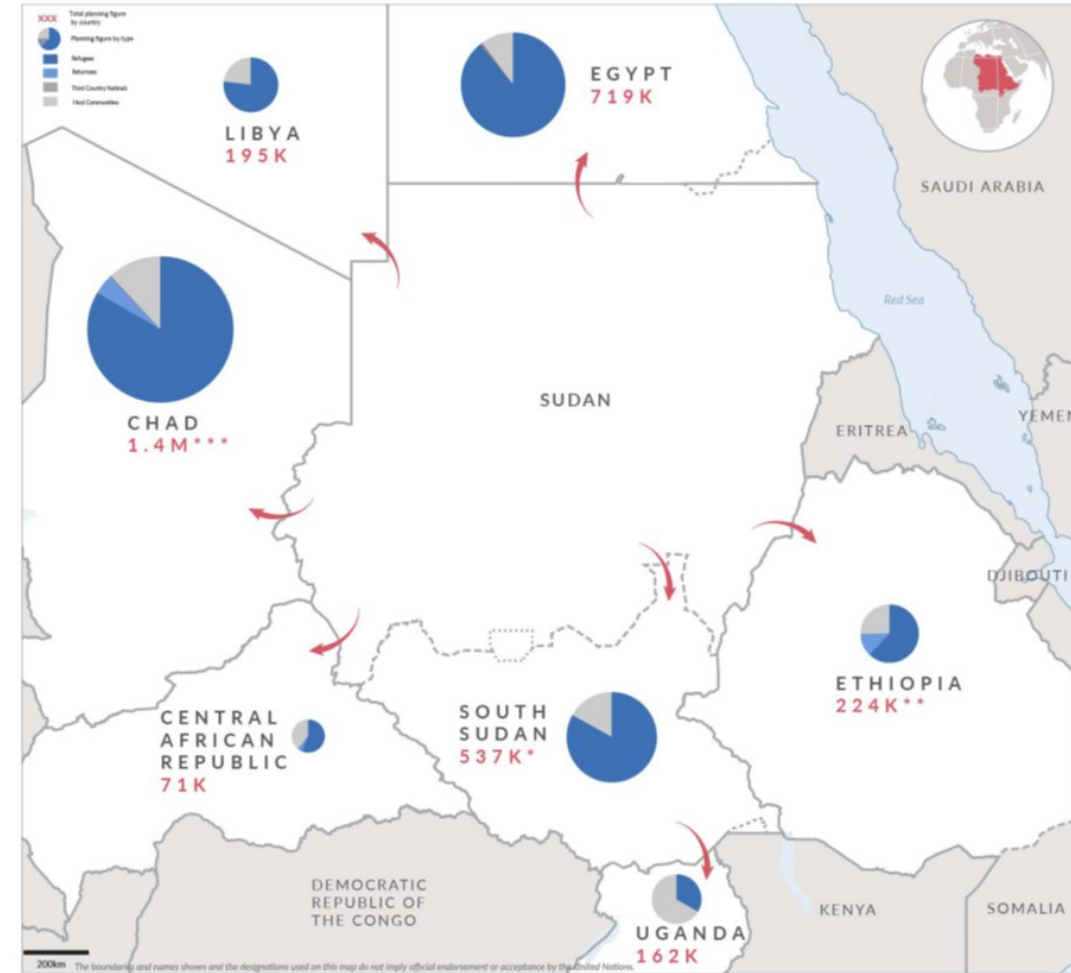
Since April 2023, **11.5 million people** have been displaced.



Over 3 million asylum seekers crossing into neighboring countries.

REGIONAL SETTLEMENT RESPONSES

- **Central African Republic:** Refugee inclusion in socio-economic services.
- **Chad:** Refugee rights nearly equal to citizens; villagization approach.
- **Ethiopia:** Right to work directive launched; land for climate-smart agriculture allocated.
- **South Sudan:** Land allocated for refugee settlements; integrated planning.
- **Uganda:** Expansion of existing settlements; integration-focused.



UN-HABITAT – UNHCR ENGAGEMENT

WHERE ARE WE?

Joint missions undertaken (Ethiopia, South Sudan, CAR, Chad) in 2024.

First assessments and participatory planning done and specific proposals developed.

Ongoing contribution by UN-Habitat to the UNHCR Regional Dashboard.

Formation of a Task Force at UN-Habitat (ROAf, Urban Lab, Crises Office).

Catalogue of Services and Business Model (Urban Displacement Lab) developed under a joint Concept Note of UNHCR and UN-Habitat

Active participation regional UNHCR initiatives (development partner meetings, joint technical session).

Establishing a Displacement Lab to Inform the Creation Of Integrated Settlements for Refugees and Host Communities in Countries Impacted by The Sudan Crisis

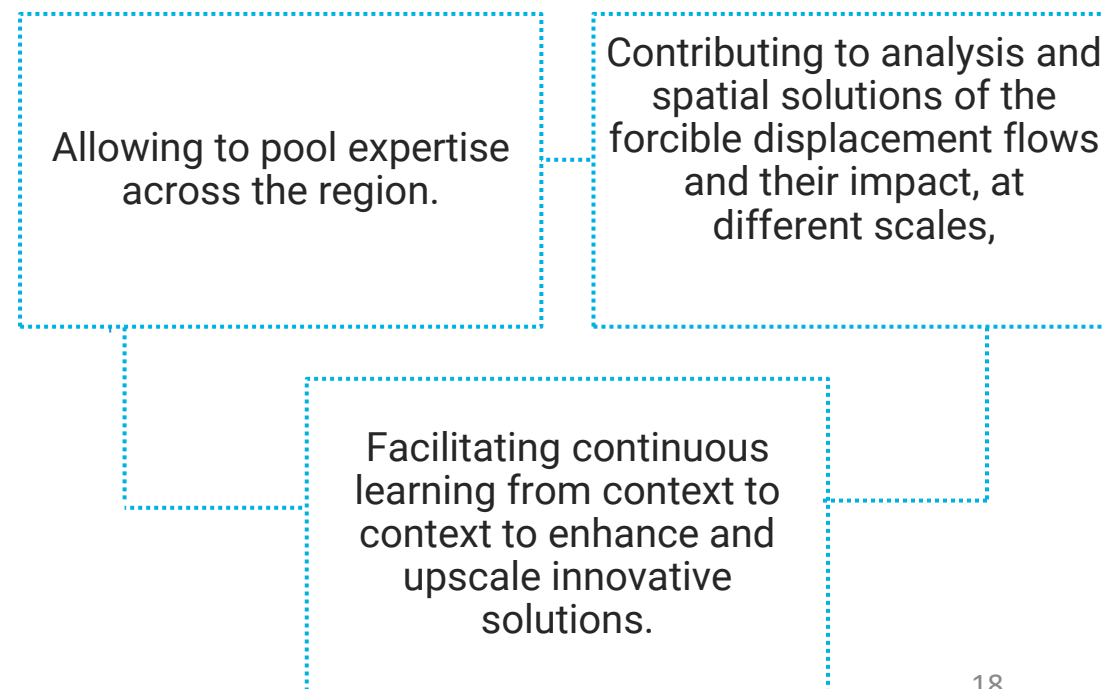


Leveraging UN-Habitat's technical advisory services in response to the Sudan regional refugee crisis to deliver both immediate and long-term solutions.



To significantly scale up UN-Habitat engagement in countries affected by the Sudan crisis, the creation of a Displacement **Lab for** Solutions has been initiated.

The **Displacement Lab** offers a coordinated approach across all countries impacted by Sudan crisis;



Summary of settlement approaches and urban responses

Country	Government Response	New arrivals (since the start of the conflict in April 2024)	Settlements
Central African Republic	<ul style="list-style-type: none"> • Inclusion in existing socio-economic services. • Freedom of movement and right to work. • GRF pledges on refugee and returnee inclusion in national development program. 	36,000	Refugee site in Korsi, Vakaga (extension of the town); other refugees in hosting communities.
Chad	<ul style="list-style-type: none"> • Decree of Asylum Law of Dec 2020 grants refugees the same rights as the ones of Chadian citizens, except for political rights. The law and its decree call upon the villagization of refugee settlements or integration into urban planning. • GRF 2023 pledges on refugee inclusion in health and the economy; a pledge of land for agriculture. 	713,000	6 new settlements and 10 extensions of existing settlements created in eastern Chad; in addition another 3 new settlements will be established in 2025.

Summary of settlement approaches and urban responses

Country	Government Response	New arrivals (since the start of the conflict in April 2024)	Settlements
Ethiopia	<ul style="list-style-type: none"> Land allocations for new settlements in Benishangul Gumuz and Amhara regions. Launch of the 2024 Right to Work Directive, with access to tax pin number, GRF 2023 pledge on integrated settlements, inclusion, access to land for climate-smart agriculture and solutions. 	63,000	New settlements: Ura and Aftit .
South Sudan	<ul style="list-style-type: none"> Land allocation in Aweil for new settlements. Freedom of movement and access to work. GRF 2023 pledge on integrated settlements, inclusion, solutions. 	843,000	New settlements in Wedweil, Aweil County in Northern Bahr el Gazal, Malakal in Upper Nile, and in Juba.
Uganda	<ul style="list-style-type: none"> Freedom of movement and right to work. GRF 2023 pledges for support of integrated settlements, inclusion, solutions. 	60,800	Expansion of the Kiryandongo settlement.

**\$ 5
MILLION**

**Budget required for all
countries**

	BUDGET IN USD
Displacement Lab Establishment for CAR, Chad, Ethiopia, South Sudan and Uganda	3,660,000
Country-Level Secondments	530,000
Policy Dialogues/Workshop Validation	360,000
Mission Costs	250,000
Regional Integrated Settlement Platform and other operational costs	200,000
TOTAL	5,000,000

**12
Months**

Implementation Period

Status as per January 2025

UNHCR has committed to pre-finance **USD 1M for 6 months** for agreed activities towards the Displacement Lab Establishment focused upon **Chad and South Sudan**.

REGIONAL RESPONSE- NEXT STEPS

Secure funding for operational scale-up.

Launch regional integrated settlement platform.

Strengthen partnerships with governments, UN agencies, and donors.

Update: The Content Manager for the platform has been recruited jointly by UN-Habitat and UNHCR.

THANK YOU!

UNHABITAT.ORG



UN-HABITAT

