

COP27 Presidency

Sustainable Urban Resilience for the next Generation Initiative
(SURGe) - working title

UN-Habitat Briefing

9 September 2022

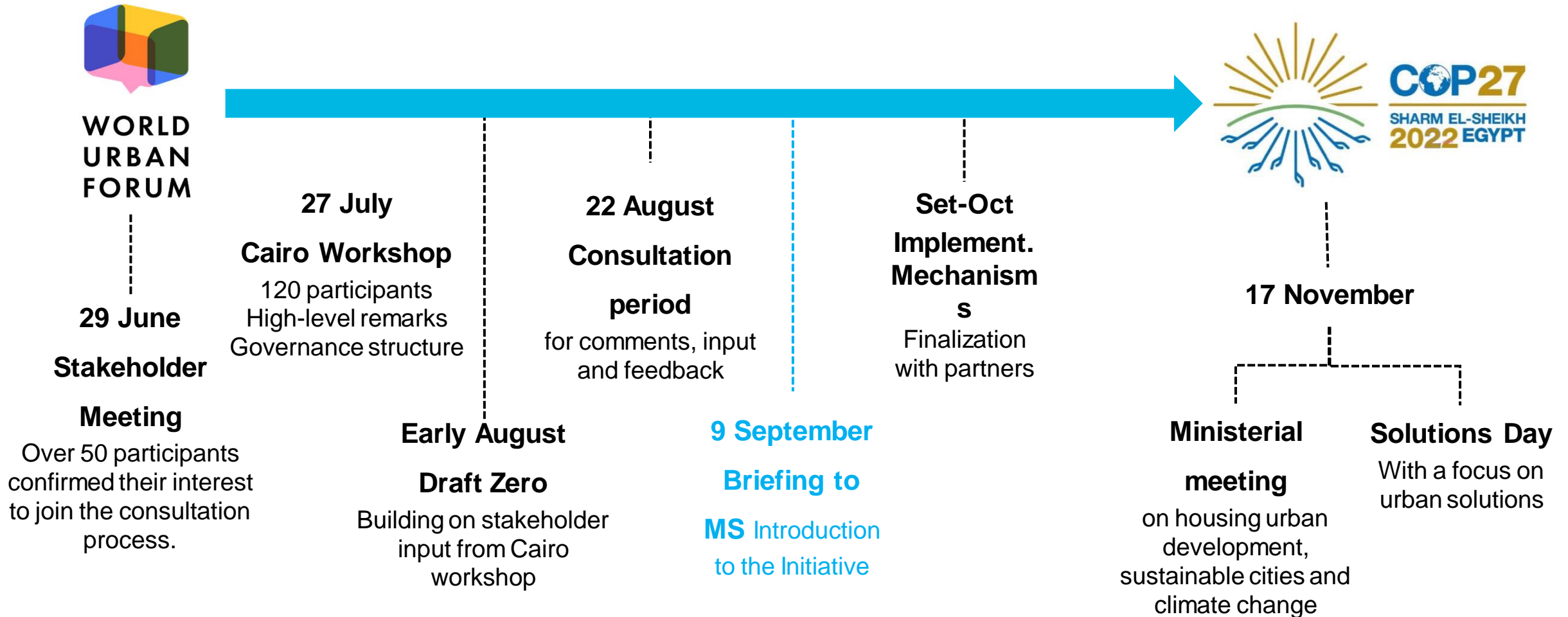
 **UN HABITAT**
FOR A BETTER URBAN FUTURE



COP27 | Initiatives to accelerate action for impact

	<p>Sustainable Urban Resilience for the next Generation (SURGe)</p> <p>In collaboration with UN-Habitat and facilitated by ICLEI</p>			
Confirmed other COP27 Initiatives	<p>Global Waste Initiative 50 by 2050</p> <ul style="list-style-type: none"> Intends to catalyze greater investment and effort to develop waste management ecosystems and resources 	<p>AWARE Action for Water Adaptation and Resilience</p> <ul style="list-style-type: none"> Catalyzing inclusive cooperation to address water as a key to climate change adaptation and resilience 	<p>FAST Food for Sustainable Transformation</p> <ul style="list-style-type: none"> Improving the quantity and quality of climate finance contributions to transform agriculture and food systems by 2030 	<p>Decent life for a Climate Resilient Africa</p> <ul style="list-style-type: none"> Supporting African Countries to implement their NDCs, through integrating climate action into sustainable urban development
	<p>Still awaiting details</p>	<p>Climate Change and Sustaining Peace</p>	<p>Sustainable Transport Initiative</p>	<p>Women</p>
	<p>Ecosystem-based approach</p>	<p>Climate proofing process of planning and shaping economic policies</p>	<p>Just financing</p>	<p>Just and Equitable Energy Transition</p>

COP27 | Background and Roadmap



Sustainable Urban Resilience for the next Generation

OBJECTIVES

Multi-level governance

- Current **NDCs are not enough** to respond to the climate emergency.

Strengthen the implementation of the climate agenda in and with cities

Finance

- In 2017 and 2018, **less than 10% of the climate finance** needed for cities was reached.

Unlock urban climate finance

Local capacity

- The **scale and complexity of the challenges** and insufficient finance limit the local capacity to tackle climate change.

Build capacity

Access to technology and innovation

- Greenhouse gas emissions in cities could be **reduced by almost 90% by 2050** with technically feasible and available measures.

Accelerate technology and innovation in cities

Equity

- **Urban vulnerable groups are disproportionately and adversely affected** by climate change while they contribute the least to urban emissions.

Ensure equity

SURGe | Ten Guiding Principles



Low-carbon



Resilient



Nature-positive



**Fair, equitable, and
inclusive**



**Multi-level governance
and climate planning**



Integrated



**Locally-led and
culture-positive**



Circular



Financing-enabling



Health-promoting

SURGe | Working groups

BUILDINGS & HOUSING

Advancing energy efficiency, low-carbon materials and processes, circularity, land-use policies, and adaptation/resilience measures

Improving equitable access to year-round potable water, and gray and wastewater management

URBAN WATER

URBAN ENERGY

Advancing renewable energy and energy efficiency in cities to provide energy access and tackle energy poverty

Accelerating and supporting the uptake of public transport and active mobility use in cities.

URBAN MOBILITY

URBAN WASTE/ CONSUMPTION

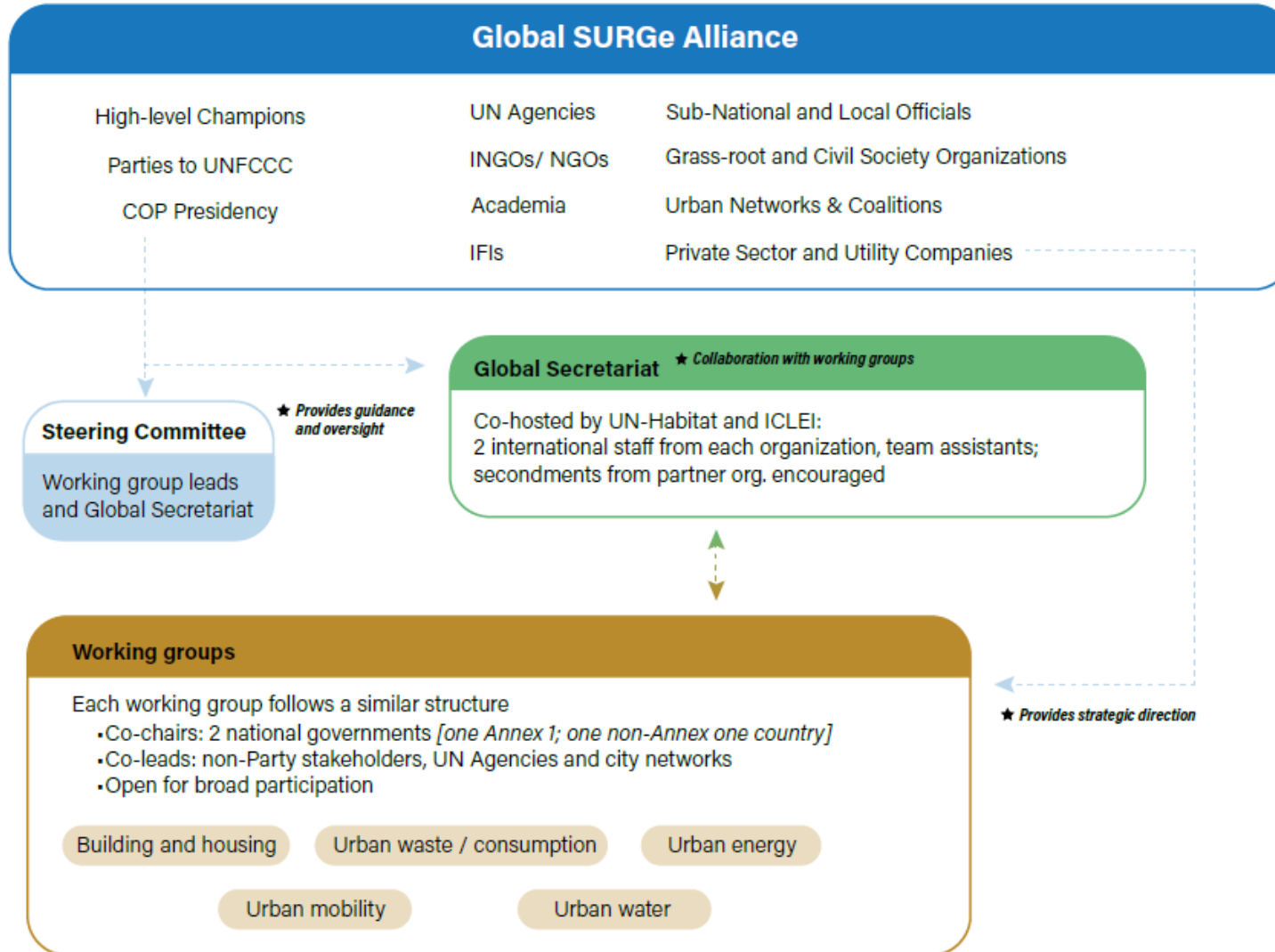
Enhancing municipal solid waste management systems that enable 'zero waste cities' and circular economies



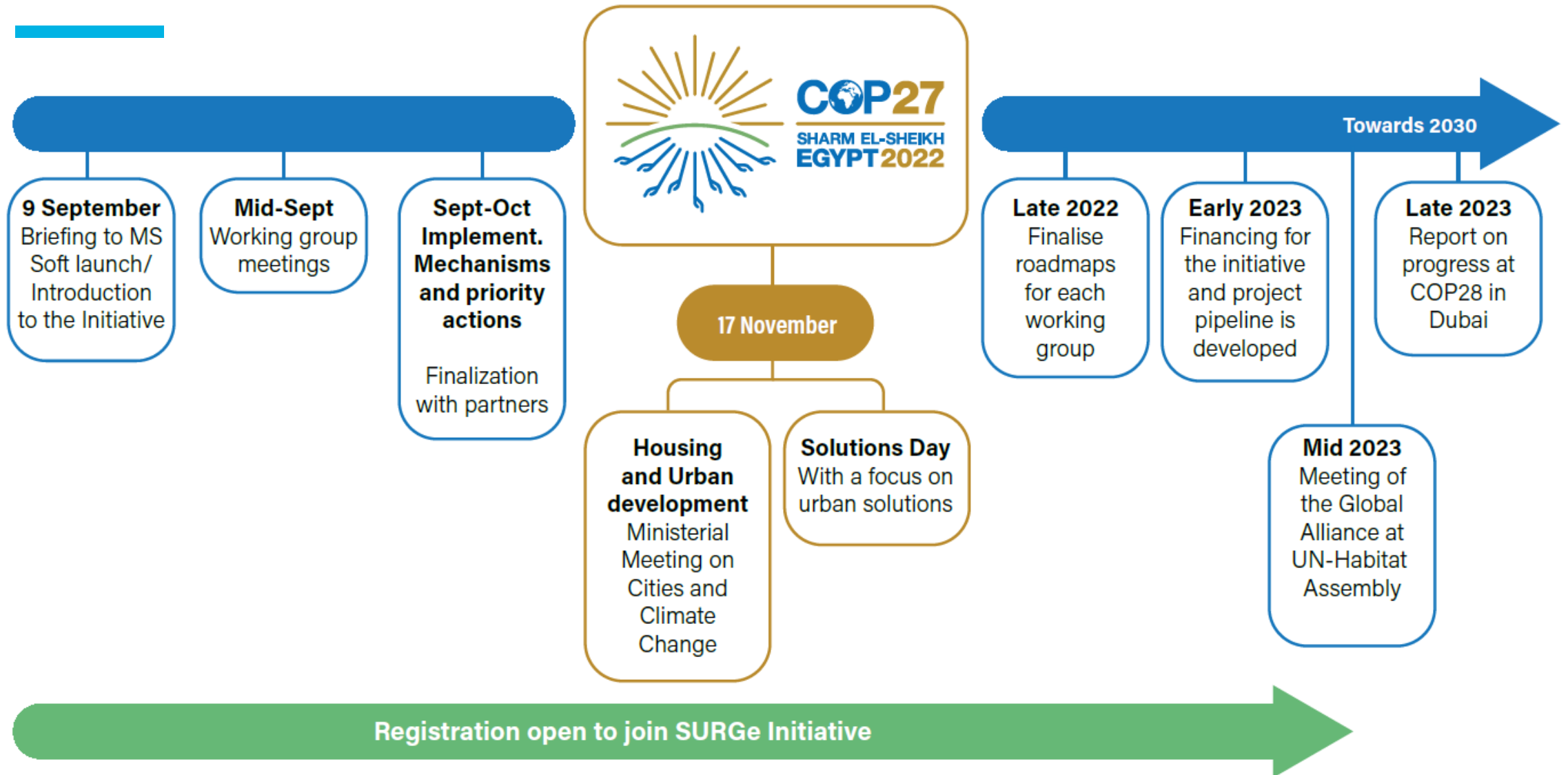
CROSS-CUTTING ISSUES

- Multi-level governance
- Climate change action planning
- Urban and territorial planning
- Climate finance
- Data
- Capacity building

SURGe | Governance



SURGe | Way forward



Thank you!

